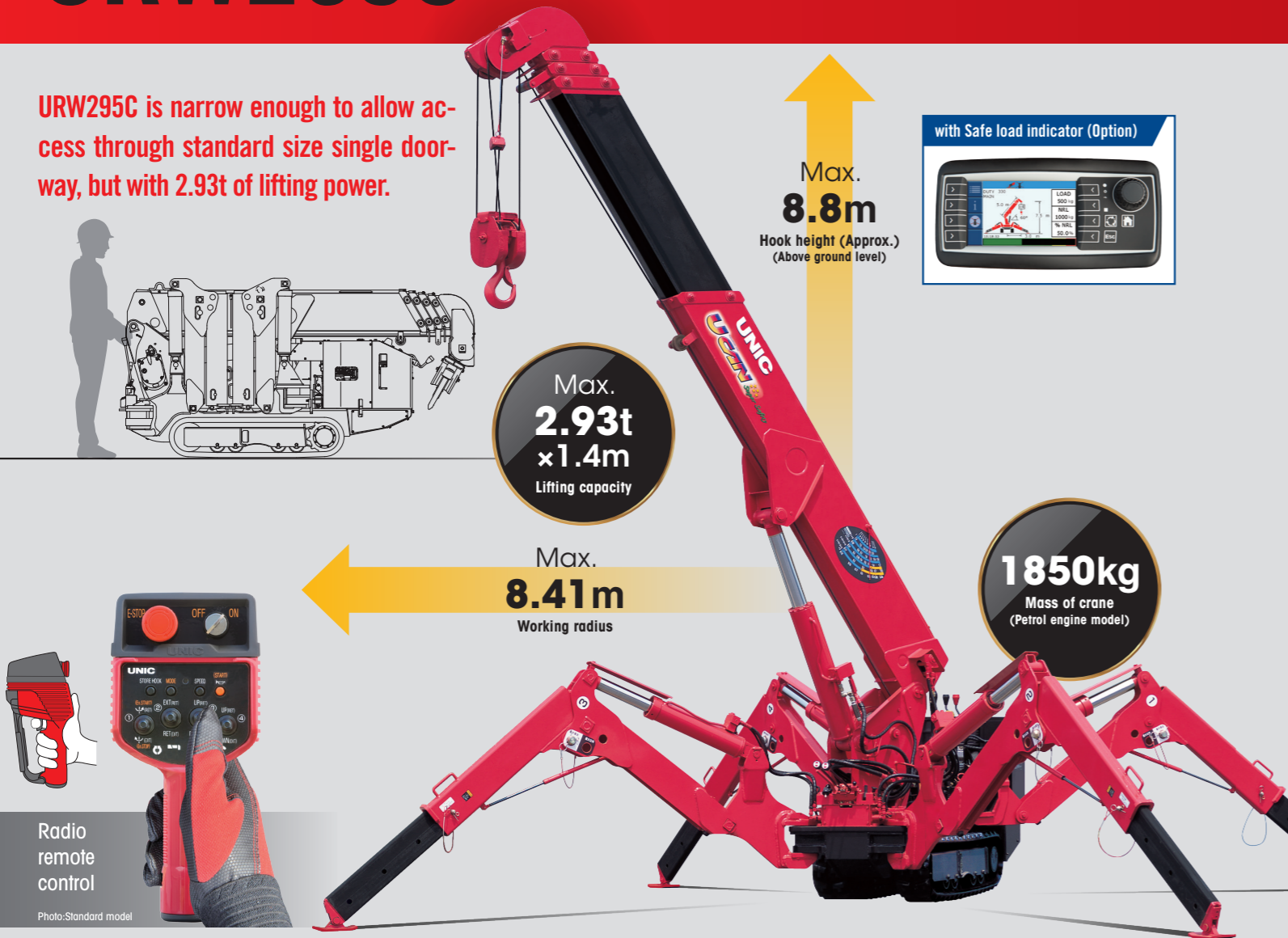


URW295C

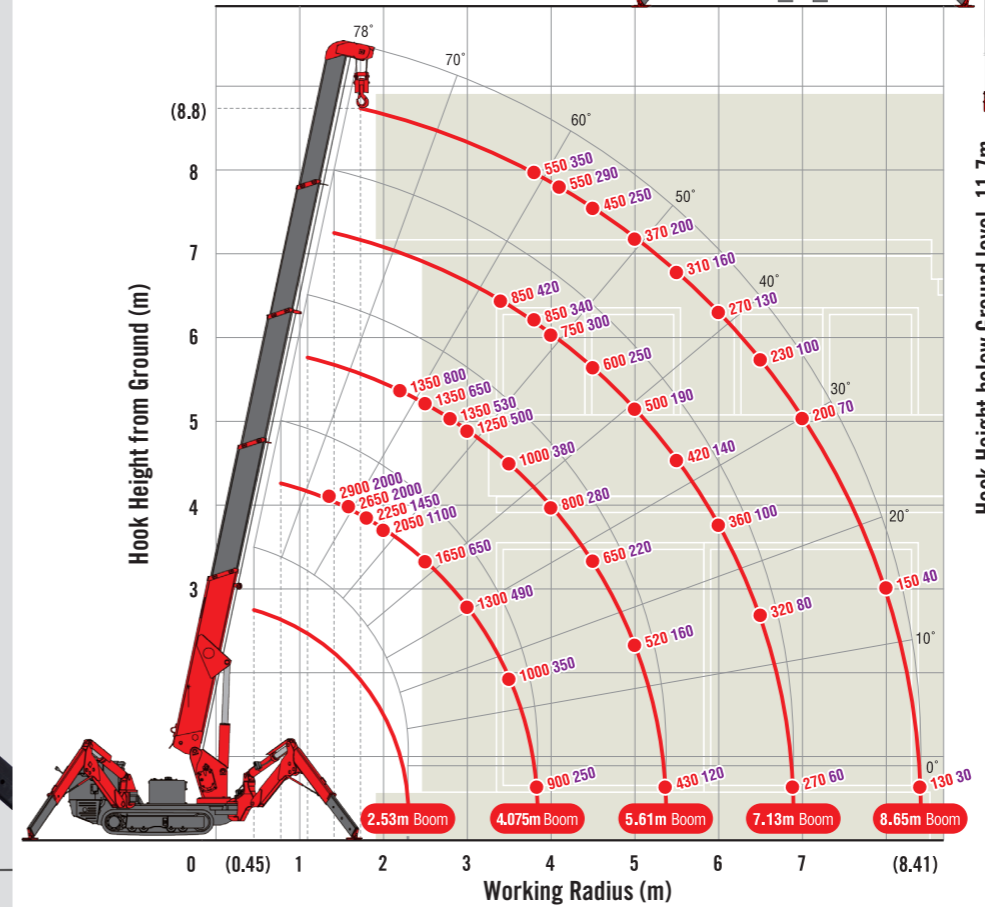
MINI CRAWLER CRANE

URW295C is narrow enough to allow access through standard size single doorway, but with 2.93t of lifting power.



WORKING RANGE & NET RATED LOADS (kg)

Outrigger ● Max-extended NOT max-extended



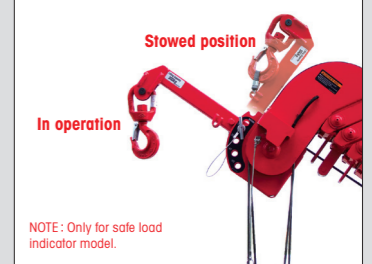
with Electric power unit (Option)



Rated power	3.7kW (3-phase 4 poles)
Voltage	AC 200V or 400V (50Hz / 60Hz)

*No cable included.

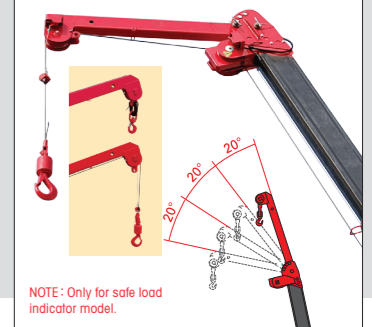
Searcher hook assembly (Option)



NOTE: Only for safe load indicator model.

Length	500mm
Lifting capacity	Max. 300kg
Tilt angles	0°, 20°, 40°, 60°

Fly jib assembly (Option)



NOTE: Only for safe load indicator model.

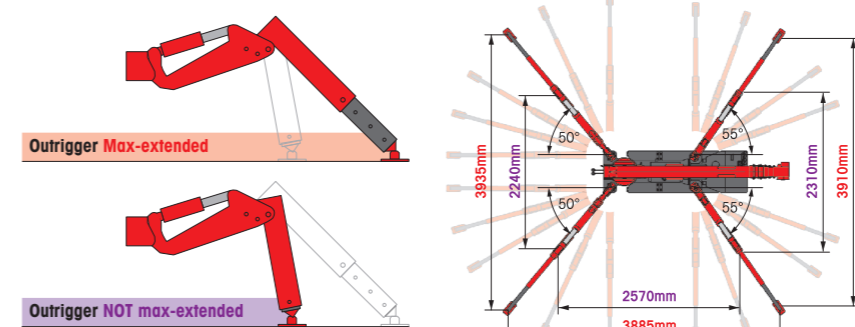
Length	1.5m
Lifting capacity	Max. 710kg
Tilt angles	0°, 20°, 40°, 60°

SPECIFICATIONS [with Electric power unit]

Crane model	URW295CP2		URW295C4	
	A (Standard)	E-1(Safe load indicator)	A (Standard)	E-1(Safe load indicator)
Lifting capacity	Max. 2.93t at 1.4m			
Working radius	Min. 0.45m, Max. 8.41m			
Hook height (Approx.)	Above ground level: Max. 8.8m			
	Below ground level: Max. 11.7m (with 4-part line)			
Boom	Length		Min. 2.53m to Max. 8.65m	
	Extending speed		6.12m / 22 sec. [50Hz] 6.12m / 34 sec. [60Hz] 6.12m / 28 sec.	
	Raising angle / speed		0° to 78° / 11 sec. [50Hz] 0° to 78° / 18 sec. [60Hz] 0° to 78° / 15 sec.	
	Structure: 5-section box beam type telescoping boom			
Winch	Single line speed: 40 m/min (at 4th layer) [50Hz] 22 m/min (at 4th layer) [60Hz] 27 m/min (at 4th layer)			
	Hook speed: 10 m/min (at 4th layer with 4-part line) [50Hz] 5.5 m/min (at 4th layer with 4-part line) [60Hz] 6.7 m/min (at 4th layer with 4-part line)			
	Wire rope: Construction : IWRC 6 x WS(26) GRADE B / Diameter x Length : 8mm x 54m / Breaking strength : 42.4kN [4320 kgf]			
Slewing	Hook block: 2.9t capacity, 2 sheaves with safety latch			
	Range: 360° continuous rotation on a ball bearing race			
Outriggers	Speed: 1.5 rpm			
	Type: 2-section (with damper) for bend and 5-section extension(front) / 4-section extension(rear). Double acting hydraulic cylinders with pilot-operated check valves, direct pushing type (Directly connected with hydraulic automatic lock device)			
Hydraulic Pump	Type: Variable delivery piston pump			
	Rated pressure: For crawling: 21.6 MPa [220 kgf/cm ²] For crane: 20.6 MPa [210 kgf/cm ²]			
Hydraulic oil tank capacity	27 liters			
Safety devices [with Safe load indicator]	Pressure relief valve for hydraulic circuit / Counterbalance valves for boom raising and boom telescoping cylinders / Double pilot-operated check valves for outrigger cylinders / Boom angle indicator with load indicator / Hook safety latch / Automatic mechanical brake for winch / Automatic stop for overwinding / Overwinding alarm / Emergency stop button / Inter-lock device of crane and crawling levers / Level / Slewing restriction limit switch / Turn over prevention device* / Load meter* / Safe load indicator / Inter-lock device of crane and outriggers / Outrigger ground contact detector / Three colored lamp / Headlight			

* Only for standard model

OUTRIGGER POSITIONS

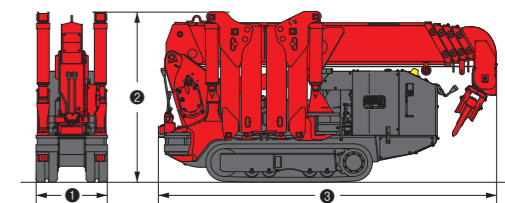


NOTE: Safe load indicator model may place each outrigger at one-angle

CRAWLING GEAR [with Electric power unit]

Crane model	URW295CP2	URW295C4
Crawling speed	0-2.3 km/h, forward / backward [AC200V 50Hz] 0-1.2 km/h [AC200V 60Hz] 0-1.4 km/h [AC400V 50Hz] 0-1.1 km/h [AC400V 60Hz] 0-1.3 km/h	0-2 km/h, forward / backward [AC200V 50Hz] 0-1.2 km/h [AC200V 60Hz] 0-1.4 km/h [AC400V 50Hz] 0-1.1 km/h [AC400V 60Hz] 0-1.3 km/h
Hill climbing ability	20°	
Tread length x width	1050mm x 180mm	
Ground contact pressure	48.0 kPa [0.49 kgf/cm ²] 51.4 kPa [0.52 kgf/cm ²]	49.8 kPa [0.51 kgf/cm ²] 53.0 kPa [0.54 kgf/cm ²]
Engine manufacturer / model	Mitsubishi / GB400LE	
Displacement	391cc	
Maximum output	6.6kW(9PS) / 1800 rpm, Rated output	
Fuel	Petrol	
Fuel tank capacity	6 liters	
Steering	Hydraulic drive independent of left / right	

DIMENSIONS [with Electric power unit]



Crane model	URW295CP2	URW295C4
① Total width	600mm	
② Total height	1375mm [1430mm]	1380mm [1450mm]
③ Total length	2690mm	2730mm [2900mm]
Mass of crane	1850kg [1980kg]	1920kg [2040kg]